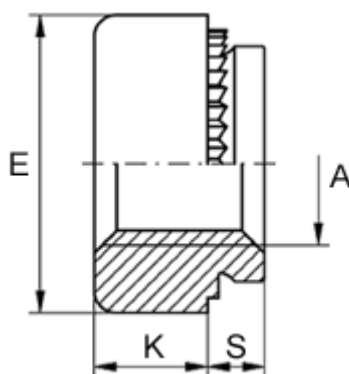


Article number: 12502000020100

Description: KLEE-coil 502 000 020.100  
M2 Hardened, zinc-pl./chr. yellow

## Measures

---



Female thread A	= M2
Height K	= 2.0
Max recess height	= 1.0
Min distance to edge	= 3.0
Outer diameter E	= 6.0
Plate thickness	= 1.5 to 2.3
Recommended bore diameter +0.05	= 4.00